



# #WeAreImpington

Over  
**30**  
years of IB teaching

**Excellent**  
pass rate for DP & CP

Over  
**30**  
subjects to choose from

**20%**  
of students achieve  
40 or more points  
(= 4 A\*s at A level)



**98%**  
of students accepted to  
their choice of university



Over  
**40** extra-curricular  
opportunities



**1:10**  
tutor to student ratio

IIC Career-related  
Programme students  
take more DP Higher  
Level subjects than  
with other providers



**51**  
Oxbridge places  
secured

**15** minutes from  
Cambridge City  
Centre

# Welcome to Impington International College

At Impington International College, you enjoy a unique educational experience with many students from the local area, other parts of the UK and around the world. We are proud to deliver an education that can be tailored to your passions, in an environment where your aspirations can be accomplished.

Our academically driven cohort achieve outstanding results and our alumni have gone on to attend the most renowned higher education institutions around the world, including: University of Cambridge, University of Oxford, London School of Economics and Political Science, University College London, King's College London, Loughborough University, UCFB, Leiden University, UCLA, The International College of Musical Theatre, Italia Conti and Smith College, USA, as well as prestigious higher-level apprenticeships.

Our small class sizes mean that you have considerable contact time with your teachers, so that all your individual needs are met, and our close-knit environment allows you

to flourish, both academically and socially.

We are proud to have offered a world class education to our students for over 30 years through the International Baccalaureate (IB). In fact, we were one of the first state schools to do so, and have consecutively been voted as the top non-selective UK provider of the IB programmes by the Sunday Times Parent Power list.

Studying an IB programme, you will gain a valuable breadth of skills and the depth of knowledge required to achieve excellence in whichever path you choose.

Alongside your studies, you can enjoy taking part in over 40 different extra-curricular activities, ranging from baking to fencing to learning Japanese. There is something for everyone at Impington International College.

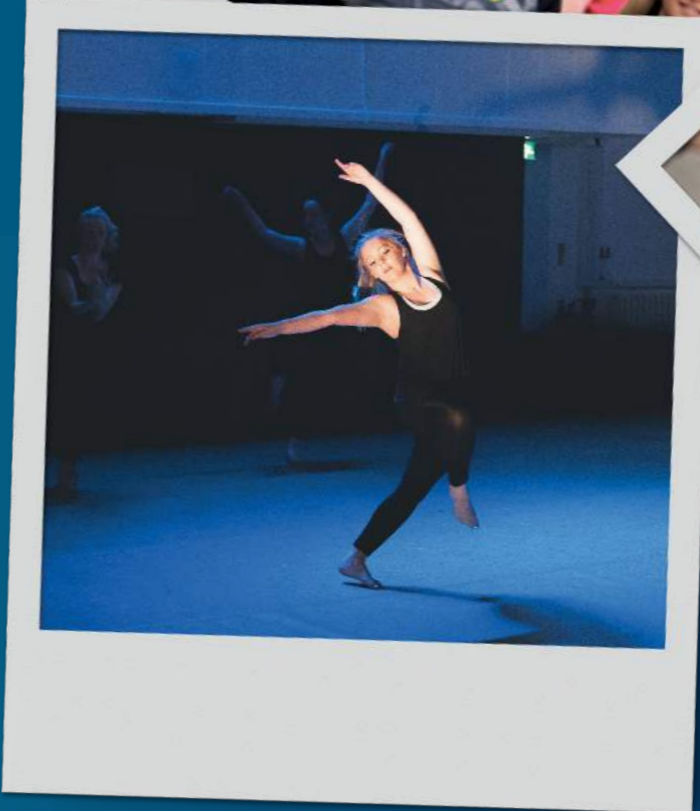
We look forward to showing you around our Sixth Form and discussing how our programmes can be personalised to suit your ambitions.



**Bronwyn Wilson**  
Head of Sixth Form - DP



**Leanne Gibbons**  
Head of Sixth Form - CP



# A World Class Education

We are proud to offer our students a range of stimulating study programmes that focus on the development of the whole student, alongside a wide range of extra-curricular activities and pastoral care. We offer:

- IB Diploma Programme (DP)
- IB Career-related Programme (CP)
  - The Performance School
  - Sports Scholarships
  - Health and Social Care Futures

All our study options are underpinned by the IB learner profile, which promotes a broad range of human attributes that go beyond academic success. Through our teaching, we engage students to follow the IB's key principles, helping you to become the best learner that you can be, and preparing you for a world beyond the classroom.

At Impington International College, we help students to become:

- Inquirers
- Knowledgeable
- Thinkers
- Communicators
- Principled
- Open-minded
- Caring
- Risk-takers
- Balanced
- Reflective



## Entry requirements

### The DP:

at least seven GCSEs with an average of Grade 6, including English Language and Mathematics, or a total of at least 28 points with a Grade 3 or higher in each IB Middle Years Programme (MYP) eAssessment. For subjects you wish to take at higher level you will need ideally at least a Grade 7.

### The CP:

at least five subjects at GCSE Grade 5 or higher, ideally including at least 4 in Mathematics and English Language and preferably a Grade 5 in your area of specialism or a total of at least 28 points with a Grade 3 or higher in each Middle Years Programme (MYP) eAssessment.

## Admissions

If you live in the Cambridge area, you can apply to Impington International College through your school using MyChoice@16.

If you are from outside of the Cambridge area, please complete the application form which can be found on the admissions page on our website.

## Host families for students

If you live too far away from our Sixth Form to stay at home, don't think you can't apply! We are lucky to have a network of host families in the local area who you will stay with and who will provide you with support, care and guidance throughout your time spent at the Sixth Form. If you need a host family, you are encouraged to apply to us as soon as possible.



Scan the QR code to find out more about the admissions process.

# Student life at Impington International College

Our College is just a 15-minute bus journey to the centre of Cambridge and our students love the freedom and green space they enjoy when they join our Sixth Form.

Our students reap the benefits of the co-located Impington Sports Centre, which offers gym and swimming facilities and there are also local tennis, netball, football, and other clubs too.

For students who want a change of scenery during their free periods, we have teamed up with local independent cafes, Stir, The Station House and d:licious coffee and sandwich bar, which offer exclusive discounts to students who show their ID badges.

## Extra-curricular opportunities

We offer a range of extra-curricular opportunities for every student, from visits abroad, to the Duke of Edinburgh Award or World Challenge. Creativity, activity and service is an important part of the DP and service learning is a core component of the CP. All students will therefore be involved in our iCAS programme on Wednesday afternoons, offering you an extraordinary range of activities to participate in, including: yoga, debating, rowing or baking!

Our commitment to Service Learning is something we are incredibly proud of. This fosters a community minded approach to learning – whether that be in local or global communities. Our links with local communities such as The Abbey Fields project and international communities in Ethiopia, Botswana, Peru and India give students the opportunity to work alongside a wide range of people from diverse cultures.



Scan the QR code to find out more about our range of extra-curricular activities and progression support.

## Careers

Our tutors and progression coordinators are available to give you in-depth and ongoing advice about the next steps in your career throughout your two years with us. You'll have a tailored progression schedule and will have the opportunity to attend regular career talks, events and a UCAS fair.



# Diploma Programme

In 2023, our DP students achieved an average point score of 34 (out of a possible 45); beating the global average of 30.24. Furthermore, 75% of our Oxbridge applicants received offers from the University of Cambridge and the University of Oxford.

The DP develops excellent depth and breadth of knowledge and is highly regarded by leading universities around the world.

By studying six different subjects, the programme offers great flexibility while you maintain vital skills such as languages and mathematics. You will be able to tailor the programme to your own strengths and interests, choosing three subjects at higher level and three at standard level from the following groups:



Our College offers over 30 different subjects to choose from. Scan the QR code to find out more.

Studies in Language and Literature

Mathematics

Sciences

The Arts

Language Acquisition

Individuals and Societies

The DP core brings together all elements of the programme and enables you to develop valuable skills needed to succeed at university, such as independence, research and enquiry. Research has also shown that students who complete the DP instead of A Levels are: more likely to go to a top 20 ranked university; more likely to obtain a first class degree; and will earn more as a graduate.

# Subject Options

- All students study **ONE** subject from each of **Groups 1-6**
- Students will need to select **THREE** subjects at **Higher Level** and **THREE** at **Standard Level**

## Group 1: Studies in Language and Literature (A)

English Language & Literature  
English Literature  
Literature & Performance

## Group 1B: Studies in Literature and Language (A)

Self-Taught

## Group 4: Sciences

Biology  
Chemistry  
Physics  
Environmental Systems and Societies  
Sports Science  
Computing

## Group 2: Language Acquisition

French B  
Spanish B  
German B  
Spanish Ab Initio  
Japanese Ab Initio  
Italian Ab Initio  
Latin

## Group 2B: Language Acquisition

English B

## Group 5: Mathematics

Maths: Analysis and Approaches  
Maths: Applications and Interpretations

## Group 3: Individuals and Societies

History  
Geography  
Psychology  
Economics  
Philosophy

## Group 6: Free Choice

Film	Biology
Visual Arts	Chemistry
Dance	Physics
Music	Global Politics
Spanish Ab Initio	History
French B	Business
	Psychology

# Career-related Programme

We inspire the next generation of West End performers, professional sports players and health, social and support workers, through the CP, which provides academic study with practical, hands-on experience.

In 2023, our CP cohort achieved an excellent pass rate of 97%, beating the national average of 79.3%, with many students gaining the equivalent of four A Levels or more.

The CP is an integrated package, where you will study: a minimum of two DP academic subjects alongside a career-related study and the CP Core.

### The Performance School:

If you are looking to enter the professional world of theatre or performing arts, our Performance School will provide you with a rigorous training programme that will stimulate your creativity, refine your practice and broaden your performance attributes.

### Sports Scholarships:

From football and rugby to netball and handball, our sport scholars benefit from specialist teaching by elite coaches and players, weekly matches and training.

### Health and Social Care Futures:

If you are passionate about working with children and people then our Health and Social Care Futures programme provides you with the skills and knowledge to be applied to real-life settings, for example in early years education or residential care.



Scan the QR code to find out more about our three CP pathways.



Scan the QR code to find out more about the unmissable opportunities to train with specialist coaches.

We work with a number of companies and institutions including Trinity Laban, Norwich City Football Club, Rob Roy Boat Club, Addenbrookes Hospital and Royal Papworth Hospital to ensure our students are given practical experience and develop professional relationships within industry. These connections will allow you to foster an understanding of each industry and how career progression works within them.

# Subject Options

- All students study **ONE** Career-Related study
- Students will need to select **TWO** subjects at **Higher Level** from the four blocks available

### Career-Related Study (BTEC)

Sport  
Performing Arts  
Health and Social Care

### Group 1: Studies in Language and Literature (A)

English Language & Literature  
English Literature  
Literature & Performance

### Group 1B: Studies in Language and Literature (A)

Self-Taught

### Group 3: Individuals and Societies

History  
Geography  
Psychology  
Economics  
Philosophy

### Group 4: Sciences

Biology  
Chemistry  
Physics  
Environmental Systems and Societies  
Sports Science  
Computing

### Group 6: Free Choice

Film  
Visual Arts  
Dance  
Music  
Spanish Ab Initio  
French B  
Maths Apps

Biology  
Chemistry  
Physics  
Global Politics  
History  
Business  
Psychology





# Busting IB myths



## MYTH

### The IB is only for the brightest students

This is 'fake news'! The IB works well for learners with a range of abilities and learning styles. Through the option to study three of your strongest subjects at higher level, alongside the remaining three at standard level you can discover your academic passions without having to restrict your future opportunities. If you have a specific career in mind, the CP allows you to create a tailored programme of practical and academic knowledge to ensure they can enter their specific industry of interest with confidence.



## MYTH

### Universities don't recognise the IB

Studying the IB can enable you to stand out from the crowd and from similar looking applicants. World leading universities recognise the DP as one of the highest standards in university preparatory education, and the majority of our CP students go on to university. Research studies suggest that more DP students go on to university than non-IB students. Research also suggests that an IB education better prepares students for university compared to their non-IB peers.

## MYTH

### It is easier to go on to university if you have studied A Levels

Most universities see IB programmes as comparable to other options such as A Levels and do not favour one over the other. The University of Oxford states on its website that it does not show preference to A Level qualifications over the DP, and that all applications are considered very carefully on individual merit. The university also emphasises that the DP is "considered good grounding for candidates who are interested in multi-disciplinary" subjects. Currently, over 160 UK universities, including University of Cambridge, accept CP students and this number is growing.

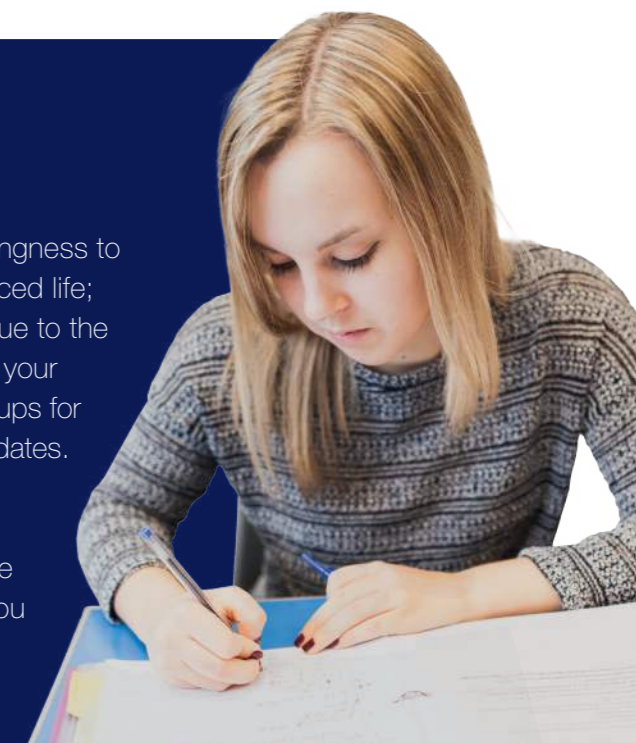


## MYTH

### The IB is too time consuming

Success in the IB will depend on your dedication to do your best; willingness to be organised in order to complete the work, while leading a full, balanced life; and a strong commitment to learning in and beyond the classroom. Due to the nature of the programme, you will benefit from more contact time with your teachers, which many students find useful. We run additional study groups for students, and provide extra support around deadlines and submission dates.

However, if at any time you are struggling, your tutor will be available and you can talk to them about any concerns you have. We also have a dedicated Sixth Form Student Manager, who can be contacted if you would like to discuss anything.



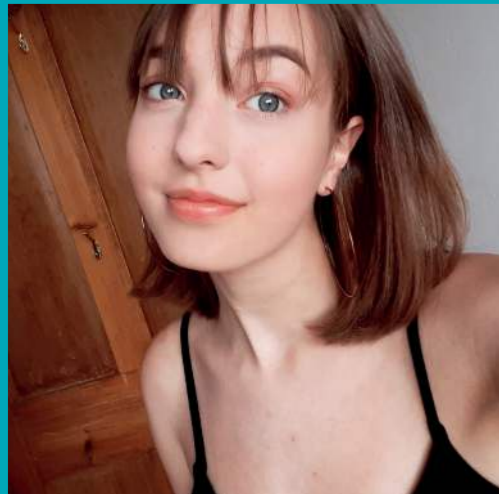
# Hear from our alumni

Over the 30 years of offering the IB, our alumni have gone on to achieve some amazing things.

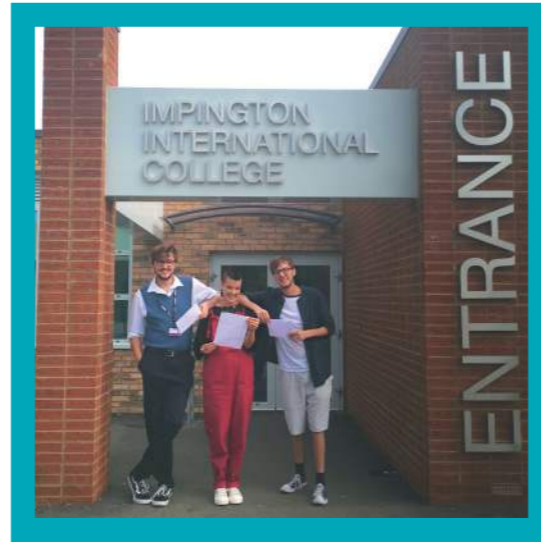


Scan the QR code to hear from our former students about their experiences at the College and how it prepared them for University.

My Impington International College experience in three words:  
**camaraderie, creativity, transformational**



**Cara Rowland**  
University of Cambridge



**Greg Middleton**  
University of Oxford

My Impington International College experience in three words:  
**diverse, holistic, supported**

My Impington International College experience in three words:  
**challenging, productive, complete**



**Eleni Green**  
Northern School of Contemporary Dance



**Luke Kirilenko**  
University of Virginia

My Impington International College experience in three words:  
**rigorous, passionate, diverse**

# Get in touch

Tours of the College are encouraged, visit our website or get in touch to arrange your visit.

## Impington International College

New Road, Impington, Cambridge, CB24 9LX

[impingtoninternational.org.uk](http://impingtoninternational.org.uk)

[international@ivc.tmet.org.uk](mailto:international@ivc.tmet.org.uk)

01223 200 402

Celebrating  
over 30 years  
of the IB

